

Location: All Sac. County areas combined

Property Types: Single Family Homes - All Properties

Price Range: \$0 - No Limit

SQFT Range: 0 - No Limit

Bedrooms: 0 - No Limit

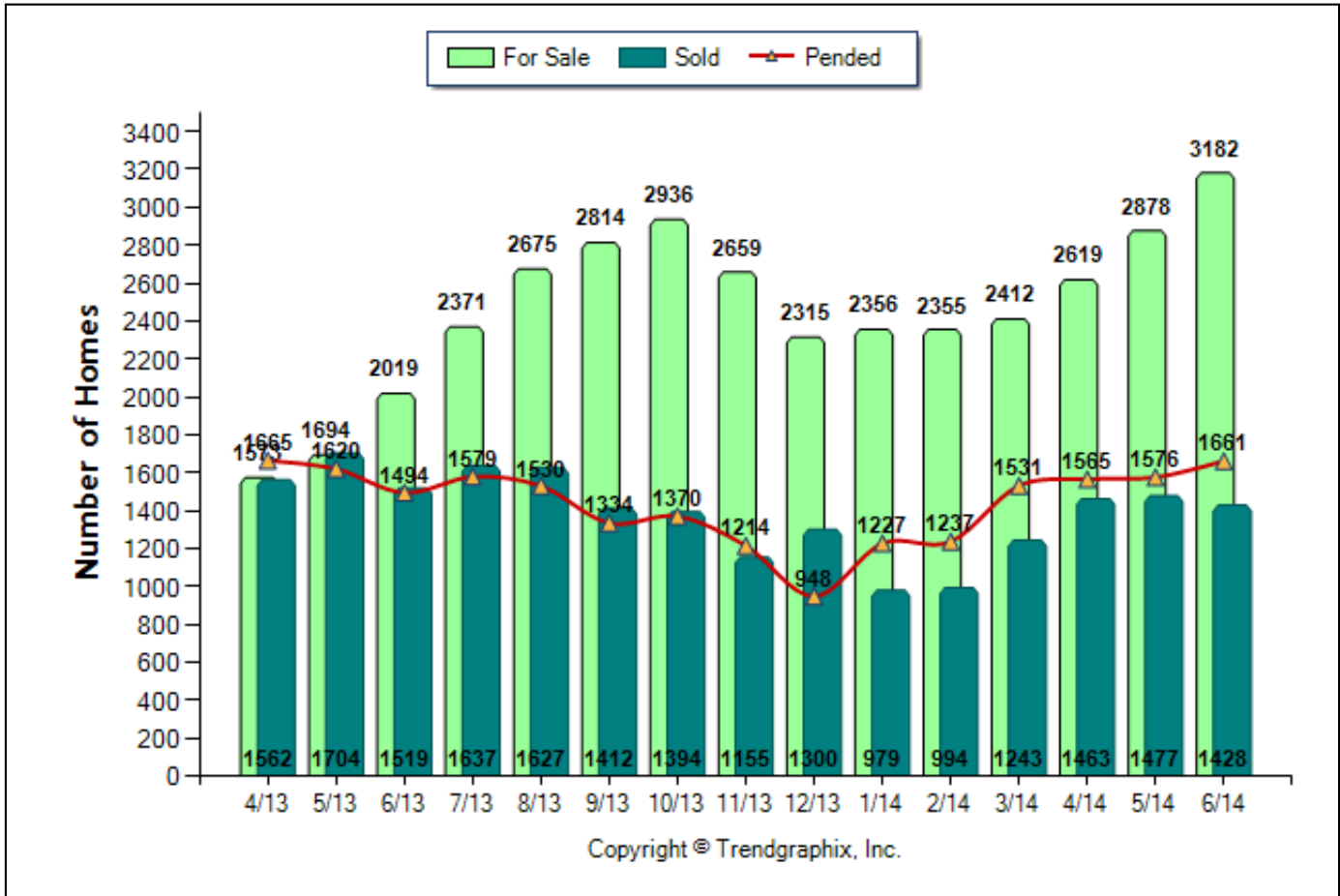
Full Baths: 0 - No Limit

Half Baths: 0 - No Limit

Year Built: 0 - No Limit

Number of Homes For Sale vs. Sold vs. Pended (Apr. 2013 - Jun. 2014)

Prepared for you by: Agent Jane



	Curnt vs. Prev Month			Curnt vs. Same Month 1 Yr Ago			Curnt vs. Same Qtr 1 Yr Ago		
	Jun. 14	May. 14	% Change	Jun. 14	Jun. 13	% Change	Apr. 14 to Jun. 14	Apr. 13 to Jun. 13	% Change
For Sale	3182	2878	10.6% ▲	3182	2019	57.6% ▲	2893	1762	64.2% ▲
Sold	1428	1477	-3.3% ▼	1428	1519	-6% ▼	1456	1595	-8.7% ▼
Pended	1661	1576	5.4% ▲	1661	1494	11.2% ▲	1601	1593	0.5% ▲

TODAY STATS		
7/1/2014 - 7/9/2014	6/1/2014 - 6/9/2014	% Change
3117	2985	4.4% ▲
252	347	-27.4% ▼
488	478	2.1% ▲

June 2014 is a Seller's market**

Home For Sale in June 2014 is 3182 units. It is up **10.6%** compared to the last month and up **57.6%** compared to the last year.

Home Closed in June 2014 is 1428 units. It is down **3.3%** compared to the last month and down **6%** compared to the last year.

Home Placed under Contract in June 2014 is 1661 units. It is up **5.4%** compared to the last month and up **11.2%** compared to the last year.

**Buyer's market: more than 6 months of inventory based on closed sales. Seller's market: less than 3 months of inventory based on closed sales. Neutral market: 3 - 6 months of inventory based on closed sales.

All reports are published July 2014, based on data available at the end of June 2014, except for the today stats. All reports presented are based on data supplied by the Sacramento, El Dorado, Placer, and Yolo Association of Realtor, Nevada County Association of Realtor or their MLSs. Neither the Associations nor their MLSs guarantee or are in anyway responsible for its accuracy. Data maintained by the Associations or their MLSs may not reflect all real estate activities in the market. Information deemed reliable but not guaranteed.

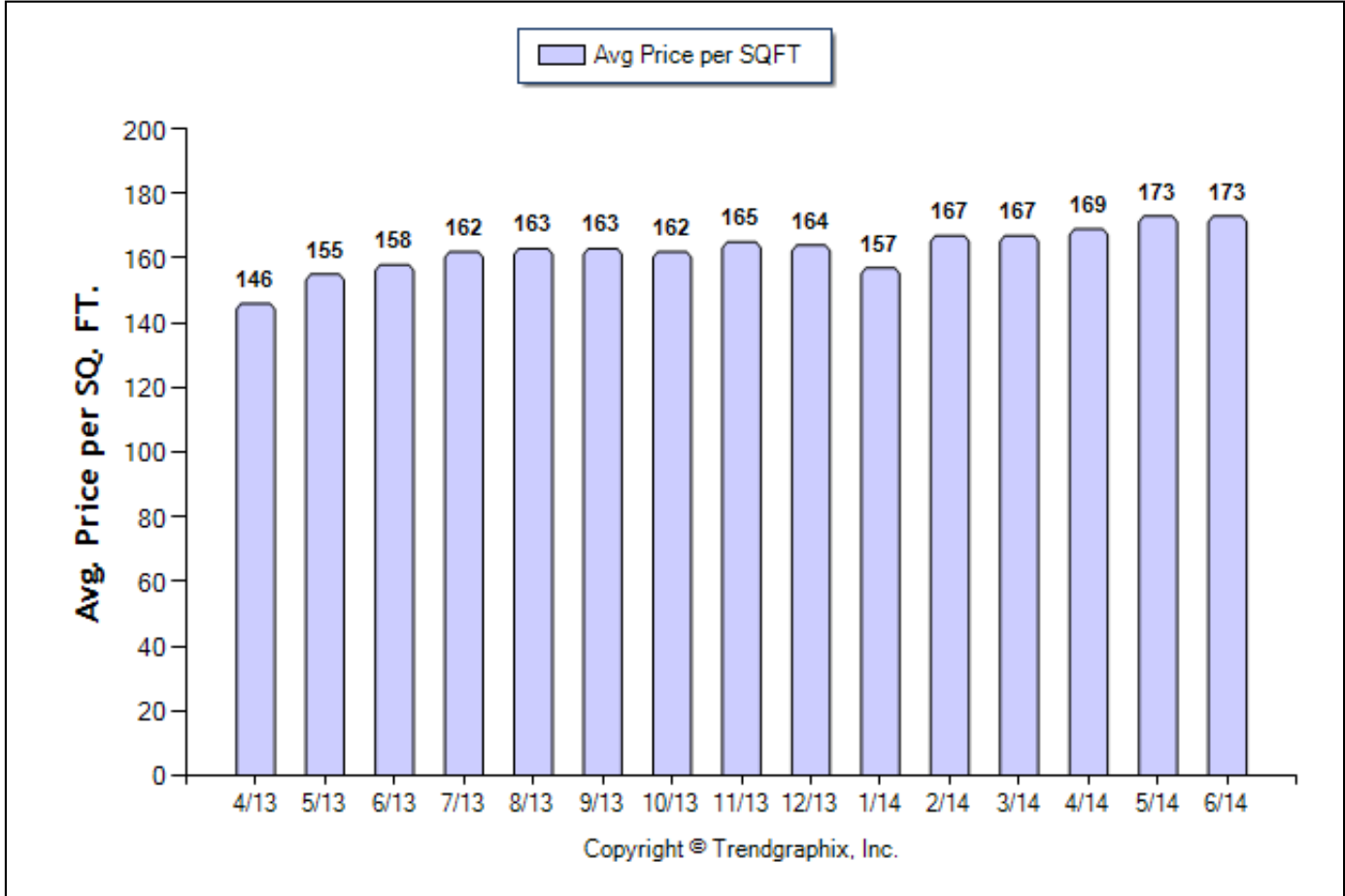
Location: All Sac. County areas combined
Property Types: Single Family Homes - All Properties
Price Range: \$0 - No Limit
Full Baths: 0 - No Limit

SQFT Range: 0 - No Limit
Half Baths: 0 - No Limit

Bedrooms: 0 - No Limit
Year Built: 0 - No Limit

Average Price per SQFT (Apr. 2013 - Jun. 2014)

Prepared for you by: Agent Jane



	Curnt vs. Prev Month			Curnt vs. Same Month 1 Yr Ago			Curnt vs. Same Qtr 1 Yr Ago			TODAY STATS		
	Jun. 14	May. 14	% Change	Jun. 14	Jun. 13	% Change	Apr. 14 to Jun. 14	Apr. 13 to Jun. 13	% Change	7/1/2014 - 7/9/2014	6/1/2014 - 6/9/2014	% Change
Avg. Sq. Ft. Price	172.8	173.3	-0.3% ▼	172.8	158.1	9.3% ▲	171.8	153.2	12.1% ▲	168	173	-2.9% ▼

June 2014 Average Sold Price per Square Footage is Neutral**

Average Sold Price per Square Footage in June 2014 is \$173. It is down **0.3%** compared to the last month and up **9.3%** compared to the last year.

**Based on 6 month trend - Appreciating/Depreciating/Neutral.

All reports are published July 2014, based on data available at the end of June 2014, except for the today stats. All reports presented are based on data supplied by the Sacramento, El Dorado, Placer, and Yolo Association of Realtor, Nevada County Association of Realtor or their MLSs. Neither the Associations nor their MLSs guarantee or are in anyway responsible for its accuracy. Data maintained by the Associations or their MLSs may not reflect all real estate activities in the market. Information deemed reliable but not guaranteed.

Location: All Sac. County areas combined
Property Types: Single Family Homes - All Properties

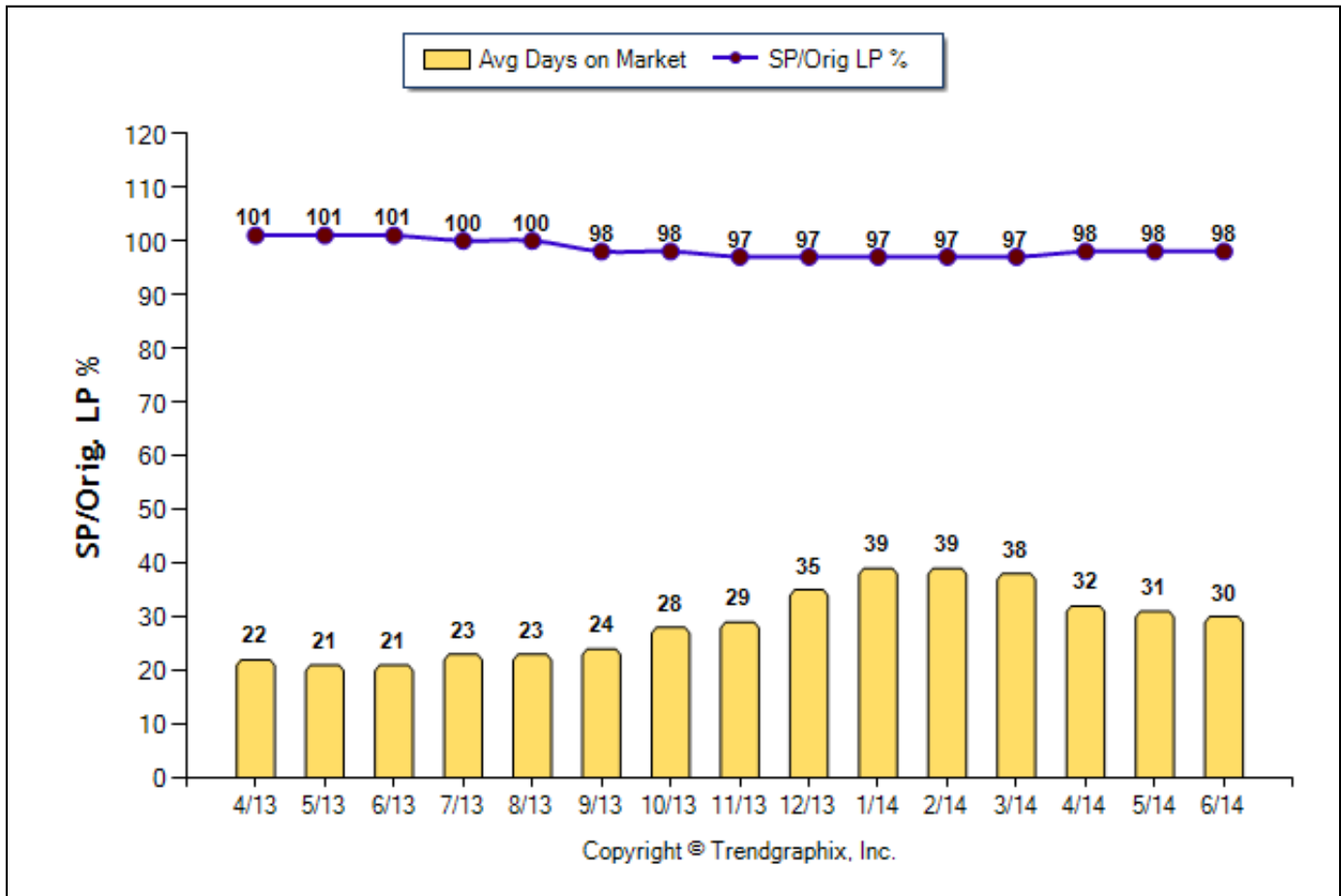
Price Range: \$0 - No Limit
Full Baths: 0 - No Limit

SQFT Range: 0 - No Limit
Half Baths: 0 - No Limit

Bedrooms: 0 - No Limit
Year Built: 0 - No Limit

Avg Days On Market & SP/Orig LP % (Apr. 2013 - Jun. 2014)

Prepared for you by: Agent Jane



	Curnt vs. Prev Month			Curnt vs. Same Month 1 Yr Ago			Curnt vs. Same Qtr 1 Yr Ago			TODAY STATS		
	Jun. 14	May. 14	% Change	Jun. 14	Jun. 13	% Change	Apr. 14 to Jun. 14	Apr. 13 to Jun. 13	% Change	7/1/2014 - 7/9/2014	6/1/2014 - 6/9/2014	% Change
Days on Market	30	31	-3.2% ▼	30	21	42.9% ▲	31	21	47.6% ▲	29	30	-3.3% ▼
Sold/Orig LP Diff. %	98	98	0%	98	101	-3% ▼	98	101	-3% ▼	97	98	-1% ▼

June 2014 Average Days on Market trend is Falling**

Average Days on Market in June 2014 is 30. It is down 3.2% compared to the last month and up 42.9% compared to the last year.

June 2014 Sold/Original List Price Ratio is Rising**

Sold/Original List Price % in June 2014 is 98%. It is the same as compared to the last month and down 3% compared to the last year.

**Based on 6 month trend - Rising/Falling/Remains Steady.

All reports are published July 2014, based on data available at the end of June 2014, except for the today stats. All reports presented are based on data supplied by the Sacramento, El Dorado, Placer, and Yolo Association of Realtor, Nevada County Association of Realtor or their MLSs. Neither the Associations nor their MLSs guarantee or are in anyway responsible for its accuracy. Data maintained by the Associations or their MLSs may not reflect all real estate activities in the market. Information deemed reliable but not guaranteed.

Location: All Sac. County areas combined
Property Types: Single Family Homes - All Properties

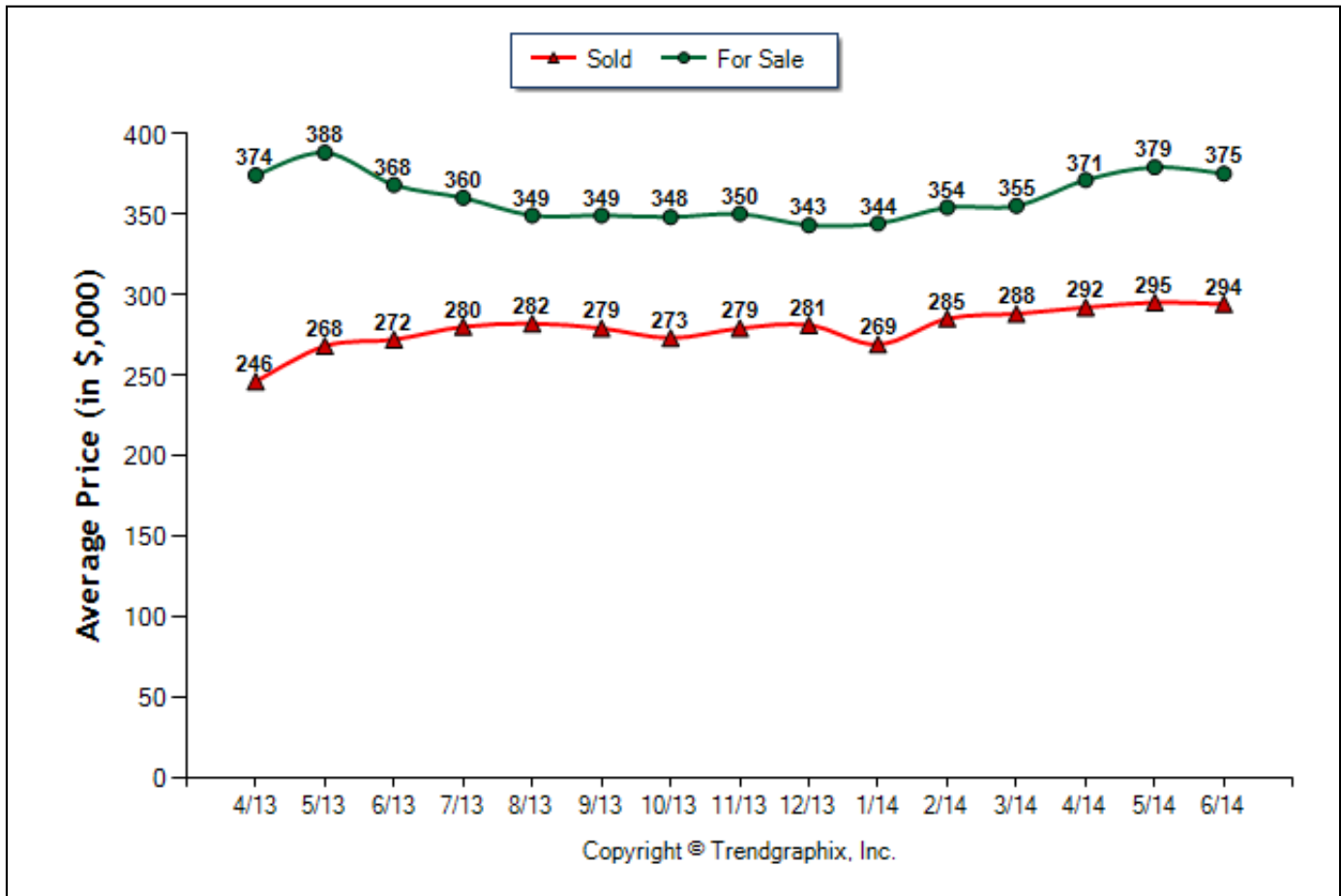
Price Range: \$0 - No Limit
Full Baths: 0 - No Limit

SQFT Range: 0 - No Limit
Half Baths: 0 - No Limit

Bedrooms: 0 - No Limit
Year Built: 0 - No Limit

Average Price of For Sale and Sold (Apr. 2013 - Jun. 2014)

Prepared for you by: Agent Jane



	Curnt vs. Prev Month			Curnt vs. Same Month 1 Yr Ago			Curnt vs. Same Qtr 1 Yr Ago			TODAY STATS		
	Jun. 14	May. 14	% Change	Jun. 14	Jun. 13	% Change	Apr. 14 to Jun. 14	Apr. 13 to Jun. 13	% Change	7/1/2014 - 7/9/2014	6/1/2014 - 6/9/2014	% Change
Avg. Active Price	375	379	-1.1% ▼	375	368	1.9% ▲	375	376	-0.3% ▼	372	376	-1.1% ▼
Avg. Sold Price	294	295	-0.3% ▼	294	272	8.1% ▲	294	262	12.2% ▲	308	294	4.8% ▲

June 2014 Average For Sale Price is Neutral**

Average For Sale Price (in thousand) in June 2014 is \$375. It is down 1.1% compared to the last month and up 1.9% compared to the last year.

June 2014 Average Sold Price is Neutral**

Average Sold Price (in thousand) in June 2014 is \$294. It is down 0.3% compared to the last month and up 8.1% compared to the last year.

**Based on 6 month trend - Appreciating/Depreciating/Neutral.

All reports are published July 2014, based on data available at the end of June 2014, except for the today stats. All reports presented are based on data supplied by the Sacramento, El Dorado, Placer, and Yolo Association of Realtor, Nevada County Association of Realtor or their MLSs. Neither the Associations nor their MLSs guarantee or are in anyway responsible for its accuracy. Data maintained by the Associations or their MLSs may not reflect all real estate activities in the market. Information deemed reliable but not guaranteed.

Location: All Sac. County areas combined

Property Types: Single Family Homes - All Properties

Price Range: \$0 - No Limit

SQFT Range: 0 - No Limit

Bedrooms: 0 - No Limit

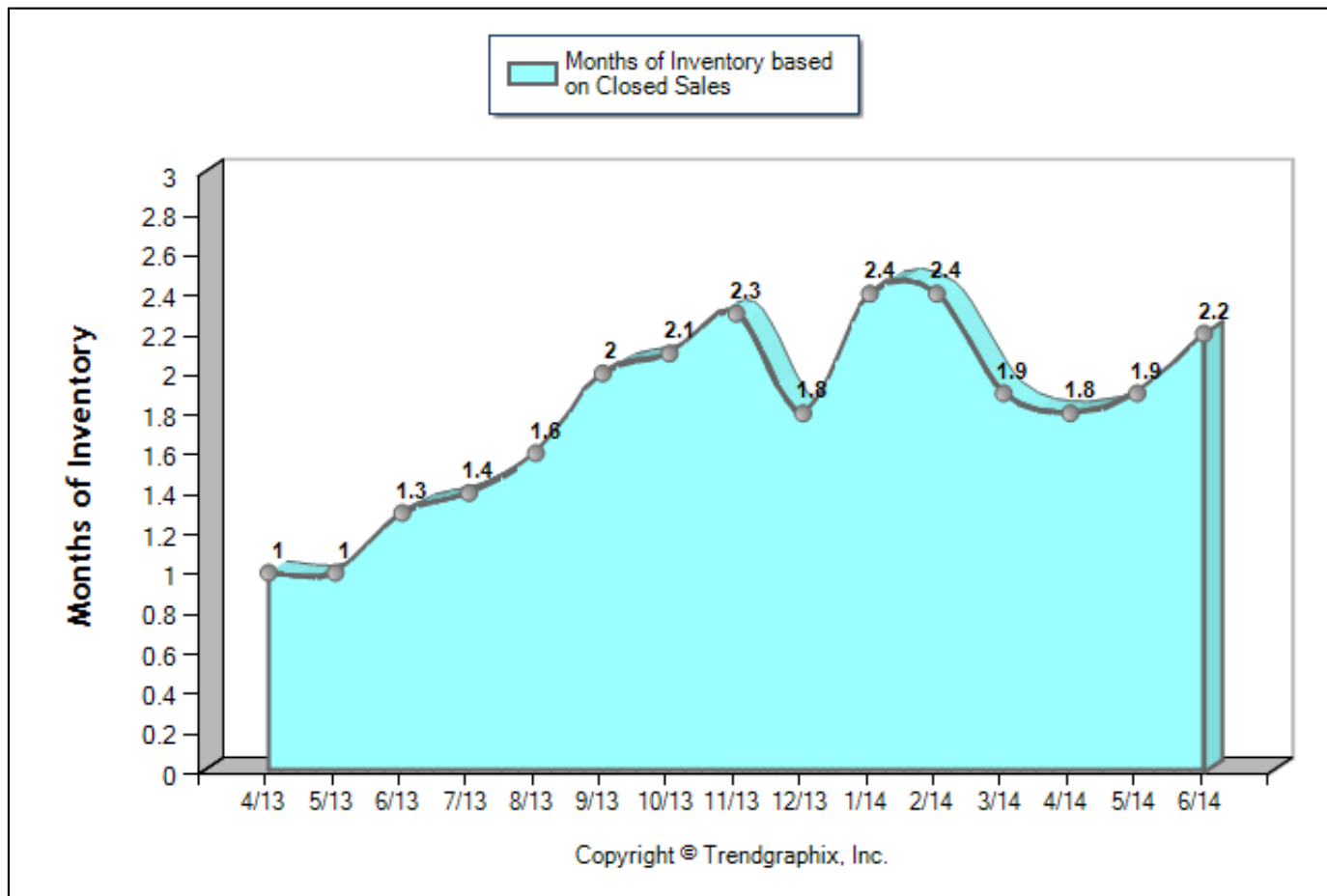
Full Baths: 0 - No Limit

Half Baths: 0 - No Limit

Year Built: 0 - No Limit

Months of Inventory Based on Closed Sales (Apr. 2013 - Jun. 2014)

Prepared for you by: Agent Jane



	Curnt vs. Prev Month			Curnt vs. Same Month 1 Yr Ago			Curnt vs. Same Qtr 1 Yr Ago			TODAY STATS		
	Jun. 14	May. 14	% Change	Jun. 14	Jun. 13	% Change	Apr. 14 to Jun. 14	Apr. 13 to Jun. 13	% Change	7/1/2014 - 7/9/2014	6/1/2014 - 6/9/2014	% Change
Months of Inventory (Closed Sales)	2.2	1.9	15.4% ▲	2.2	1.3	67.7% ▲	2	1.1	81.5% ▲	12.4	8.6	44.2% ▲

June 2014 is a Seller's market**

Months of Inventory based on Closed Sales in June 2014 is 2.2. It is up **15.4%** compared to the last month and up **67.7%** compared to the last year.

**Buyer's market: more than 6 months of inventory based on closed sales. Seller's market: less than 3 months of inventory based on closed sales. Neutral market: 3 - 6 months of inventory based on closed sales.

All reports are published July 2014, based on data available at the end of June 2014, except for the today stats. All reports presented are based on data supplied by the Sacramento, El Dorado, Placer, and Yolo Association of Realtor, Nevada County Association of Realtor or their MLSs. Neither the Associations nor their MLSs guarantee or are in anyway responsible for its accuracy. Data maintained by the Associations or their MLSs may not reflect all real estate activities in the market. Information deemed reliable but not guaranteed.

Location: All Sac. County areas combined

Property Types: Single Family Homes - All Properties

Price Range: \$0 - No Limit

SQFT Range: 0 - No Limit

Bedrooms: 0 - No Limit

Full Baths: 0 - No Limit

Half Baths: 0 - No Limit

Year Built: 0 - No Limit

Date	4/13	5/13	6/13	7/13	8/13	9/13	10/13	11/13	12/13	1/14	2/14	3/14	4/14	5/14	6/14
For Sale	1573	1694	2019	2371	2675	2814	2936	2659	2315	2356	2355	2412	2619	2878	3182
New Listing	2050	2006	2050	2235	2233	1887	1936	1368	1049	1807	1605	1948	2186	2244	2172
Sold	1562	1704	1519	1637	1627	1412	1394	1155	1300	979	994	1243	1463	1477	1428
Pended	1665	1620	1494	1579	1530	1334	1370	1214	948	1227	1237	1531	1565	1576	1661
Months of Inventory (Closed Sales)	1	1	1.3	1.4	1.6	2	2.1	2.3	1.8	2.4	2.4	1.9	1.8	1.9	2.2
Months of Inventory (Pended Sales)	0.9	1	1.4	1.5	1.7	2.1	2.1	2.2	2.4	1.9	1.9	1.6	1.7	1.8	1.9
Absorption Rate (Closed Sales) %	99.3	100.6	75.2	69	60.8	50.2	47.5	43.4	56.2	41.6	42.2	51.5	55.9	51.3	44.9
Absorption Rate (Pended Sales) %	105.8	95.6	74	66.6	57.2	47.4	46.7	45.7	41	52.1	52.5	63.5	59.8	54.8	52.2
Avg. Active Price	374	388	368	360	349	349	348	350	343	344	354	355	371	379	375
Avg. Sold Price	246	268	272	280	282	279	273	279	281	269	285	288	292	295	294
Avg. Sq. Ft. Price	146	155	158	162	163	163	162	165	164	157	167	167	169	173	173
Sold/List Diff. %	101	101	101	101	101	100	100	99	99	99	99	99	99	99	99
Sold/Orig LP Diff. %	101	101	101	100	100	98	98	97	97	97	97	97	98	98	98
Days on Market	22	21	21	23	23	24	28	29	35	39	39	38	32	31	30
Avg CDOM	26	24	23	26	25	28	31	34	40	46	48	44	39	36	35
Median	220	240	245	250	253	251	251	245	248	240	258	260	265	270	270

All reports are published July 2014, based on data available at the end of June 2014, except for the today stats. All reports presented are based on data supplied by the Sacramento, El Dorado, Placer, and Yolo Association of Realtor, Nevada County Association of Realtor or their MLSs. Neither the Associations nor their MLSs guarantee or are in anyway responsible for its accuracy. Data maintained by the Associations or their MLSs may not reflect all real estate activities in the market. Information deemed reliable but not guaranteed.